

- NOTES: 1. MAINTAIN 18" VERTICAL & 24" HORIZONTAL SEPARATION BETWEEN SEWER & WATER SERVICE LINES.
 2. INSTALL MUELLER PACK JOINT E-15429 TO THE END OF COPPER FITTING WITH INSERT SLEEVE.
 3. ATTACH 12 GAUGE TRACER WIRE FROM PACK JOINT TO WATER METER.
 4. CONNECTIONS TO EXISTING COPPER PIGTAIL ARE ALLOWED WITH APPROVED FITTING.

CORPORATION STOPS:
 McDONALD - 4701 (1")
 MUELLER - H15000 (1")
 FORD - F600 (1")

CURB STOPS:
MINNEAPOLIS PATTERN
 McDONALD - 6504 (1")
 MUELLER - B15-154 (1")
 FORD - B22-444 (1")

CURB BOXES:
 McDONALD - 5631-B
 WESTERN 100

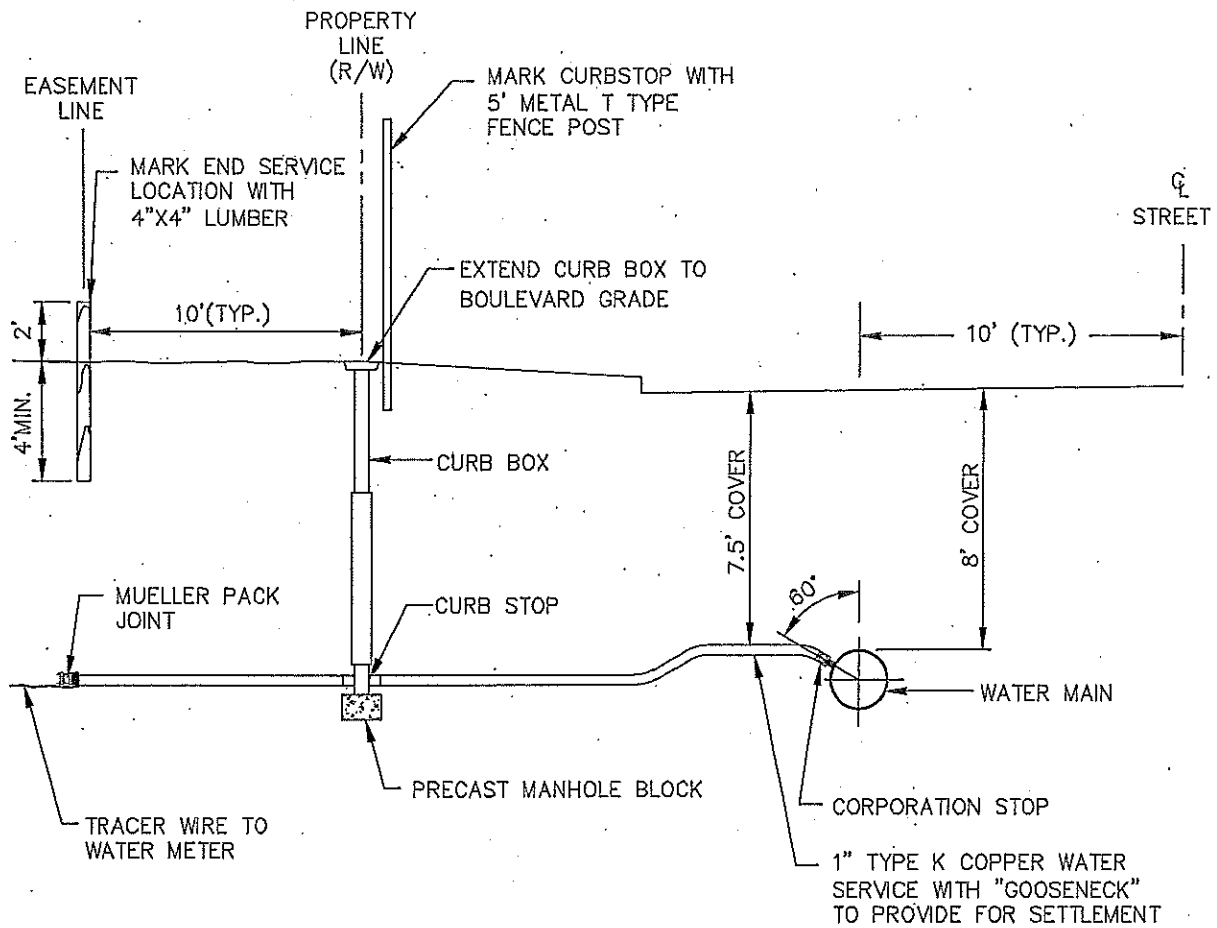
CAPS:
 McDONALD - 5627-LTW
 WITH 1 1/4" DIAMETER
 BRASS CONCENTRIC PLUG.

Revisions:	
12/2010	
5/2012	



WATER SERVICE
(PLASTIC PIPE)

STANDARD PLATE NO.
W-1 PP



- NOTES: 1. MAINTAIN 18" VERTICAL & 24" HORIZONTAL SEPARATION BETWEEN SEWER & WATER SERVICE LINES.
 2. INSTALL MUELLER PACK JOINT E-15429 TO THE END OF COPPER FITTING WITH INSERT SLEEVE.
 3. ATTACH 12 GAUGE TRACER WIRE FROM PACK JOINT TO WATER METER.
 4. CONNECTIONS TO EXISTING COPPER PIGTAIL ARE ALLOWED WITH APPROVED FITTING.

CORPORATION STOPS:
 McDONALD - 4701 (1")
 MUELLER - H15000 (1")
 FORD - F600 (1")

CURB STOPS:
MINNEAPOLIS PATTERN
 McDONALD - 6504 (1")
 MUELLER - B15-154 (1")
 FORD - B22-444 (1")

CURB BOXES:
 McDONALD - 5631-B
 WESTERN 100

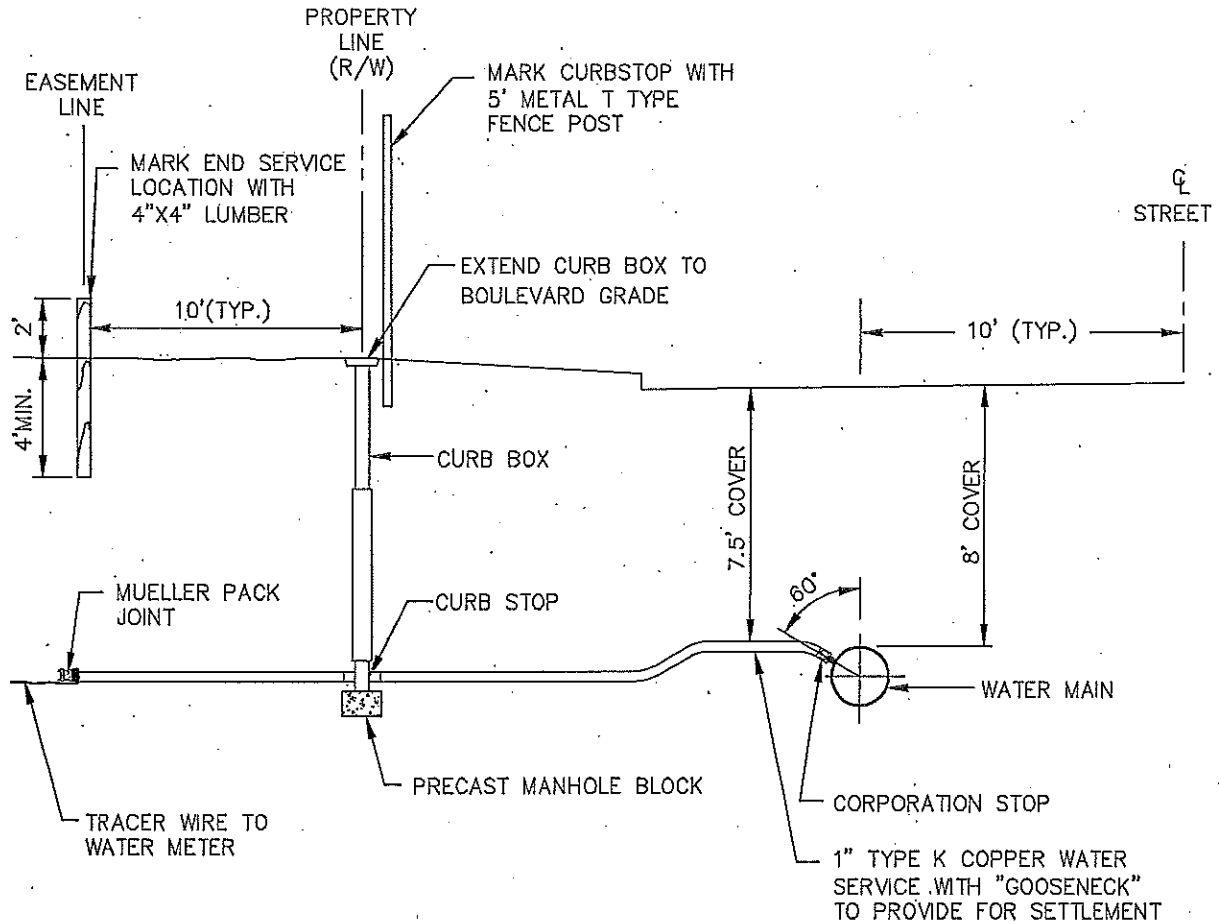
CAPS:
 McDONALD - 5627-LTW
 WITH 1 1/4" DIAMETER
 BRASS CONCENTRIC PLUG.

Revisions:	
12/2010	
5/2012	



WATER SERVICE
(PLASTIC PIPE)

STANDARD PLATE NO.
W-1 PP



- NOTES:
1. MAINTAIN 18" VERTICAL & 24" HORIZONTAL SEPARATION BETWEEN SEWER & WATER SERVICE LINES.
 2. INSTALL MUELLER PACK JOINT E-15429 TO THE END OF COPPER FITTING WITH INSERT SLEEVE.
 3. ATTACH 12 GAUGE TRACER WIRE FROM PACK JOINT TO WATER METER.
 4. CONNECTIONS TO EXISTING COPPER PIGTAIL ARE ALLOWED WITH APPROVED FITTING.

CORPORATION STOPS:
 McDONALD - 4701 (1")
 MUELLER - H15000 (1")
 FORD - F600 (1")

CURB STOPS:
MINNEAPOLIS PATTERN
 McDONALD - 6504 (1")
 MUELLER - B15-154 (1")
 FORD - B22-444 (1")

CURB BOXES:
 McDONALD - 5631-B
 WESTERN 100

CAPS:
 McDONALD - 5627-LTW
 WITH 1 1/4" DIAMETER
 BRASS CONCENTRIC PLUG.

Revisions:

12/2010

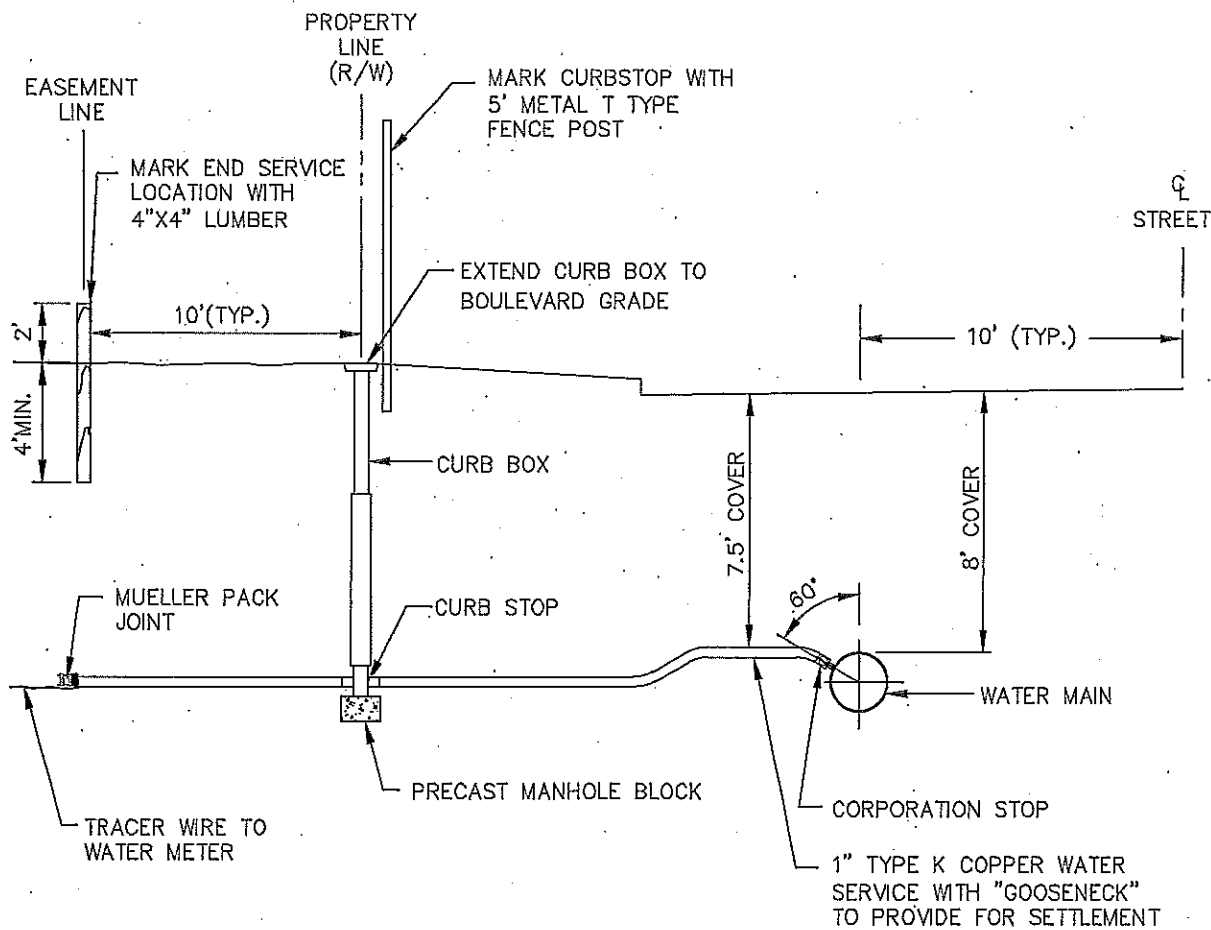
5/2012



WATER SERVICE
 (PLASTIC PIPE)

STANDARD PLATE NO.

W-1 PP



- NOTES:
1. MAINTAIN 18" VERTICAL & 24" HORIZONTAL SEPARATION BETWEEN SEWER & WATER SERVICE LINES.
 2. INSTALL MUELLER PACK JOINT E-15429 TO THE END OF COPPER FITTING WITH INSERT SLEEVE.
 3. ATTACH 12 GAUGE TRACER WIRE FROM PACK JOINT TO WATER METER.
 4. CONNECTIONS TO EXISTING COPPER PIGTAIL ARE ALLOWED WITH APPROVED FITTING.

CORPORATION STOPS:
 McDONALD - 4701 (1")
 MUELLER - H15000 (1")
 FORD - F600 (1")

CURB STOPS:
MINNEAPOLIS PATTERN
 McDONALD - 6504 (1")
 MUELLER - B15-154 (1")
 FORD - B22-444 (1")

CURB BOXES:
 McDONALD - 5631-B
 WESTERN 100

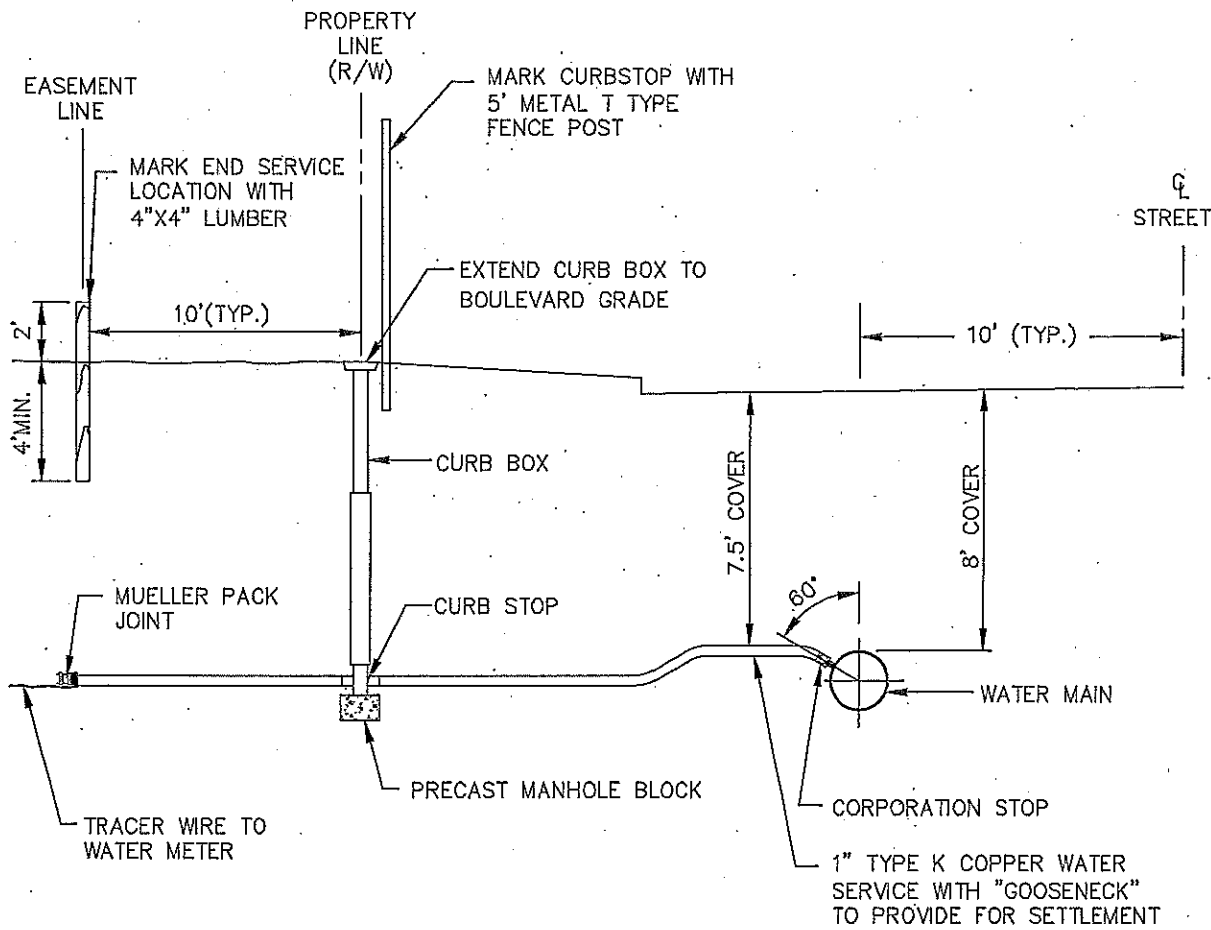
CAPS:
 McDONALD - 5627-LTW
 WITH 1 1/4" DIAMETER
 BRASS CONCENTRIC PLUG.

Revisions:	
12/2010	
5/2012	



WATER SERVICE
(PLASTIC PIPE)

STANDARD PLATE NO.
W-1 PP



- NOTES: 1. MAINTAIN 18" VERTICAL & 24" HORIZONTAL SEPARATION BETWEEN SEWER & WATER SERVICE LINES.
 2. INSTALL MUELLER PACK JOINT E-15429 TO THE END OF COPPER FITTING WITH INSERT SLEEVE.
 3. ATTACH 12 GAUGE TRACER WIRE FROM PACK JOINT TO WATER METER.
 4. CONNECTIONS TO EXISTING COPPER PIGTAIL ARE ALLOWED WITH APPROVED FITTING.

CORPORATION STOPS:
 McDONALD - 4701 (1")
 MUELLER - H15000 (1")
 FORD - F600 (1")

CURB STOPS:
MINNEAPOLIS PATTERN
 McDONALD - 6504 (1")
 MUELLER - B15-154 (1")
 FORD - B22-444 (1")

CURB BOXES:
 McDONALD - 5631-B
 WESTERN 100

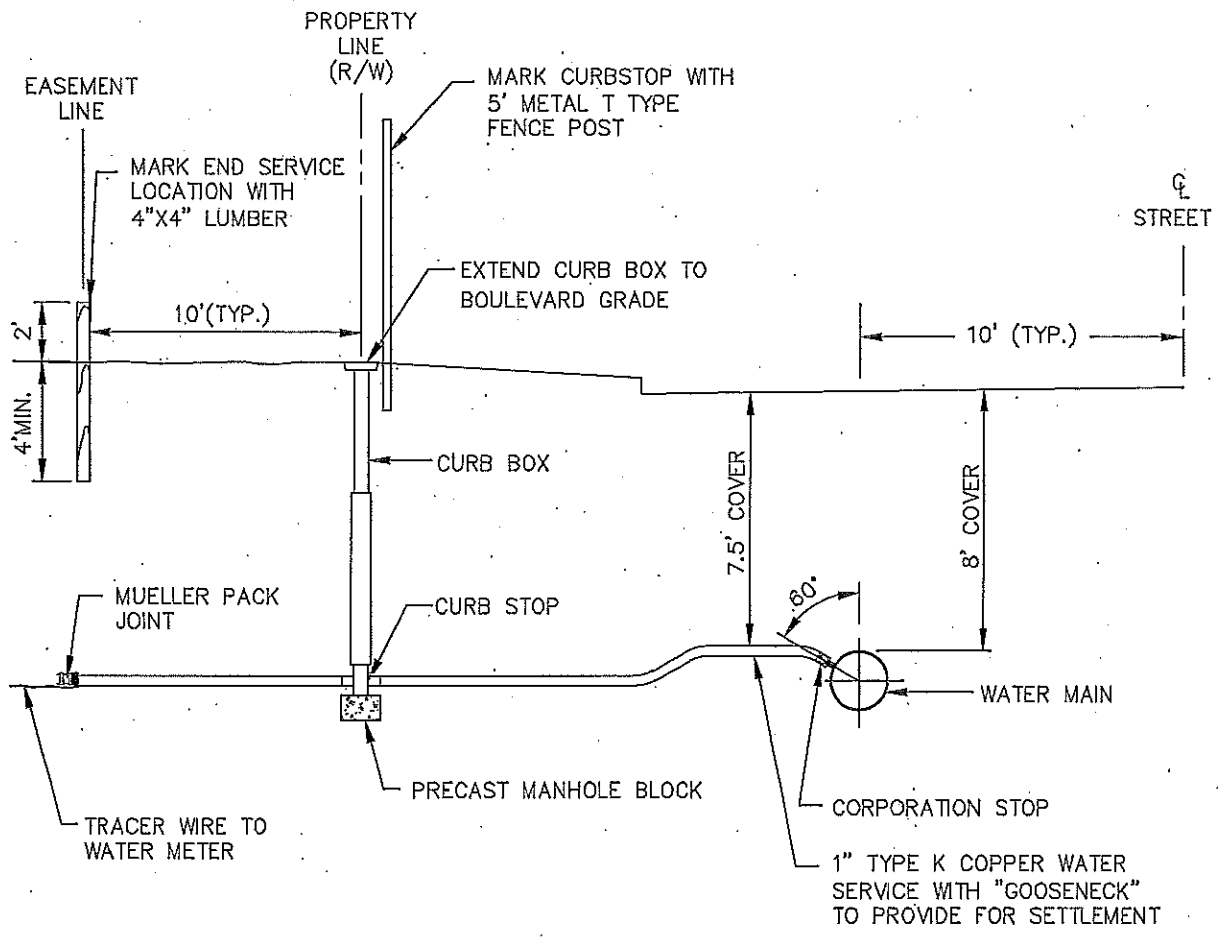
CAPS:
 McDONALD - 5627-LTW
 WITH 1 1/4" DIAMETER
 BRASS CONCENTRIC PLUG.

Revisions:	
12/2010	
5/2012	



WATER SERVICE
(PLASTIC PIPE)

STANDARD PLATE NO.
W-1 PP



- NOTES:
1. MAINTAIN 18" VERTICAL & 24" HORIZONTAL SEPARATION BETWEEN SEWER & WATER SERVICE LINES.
 2. INSTALL MUELLER PACK JOINT E-15429 TO THE END OF COPPER FITTING WITH INSERT SLEEVE.
 3. ATTACH 12 GAUGE TRACER WIRE FROM PACK JOINT TO WATER METER.
 4. CONNECTIONS TO EXISTING COPPER PIGTAIL ARE ALLOWED WITH APPROVED FITTING.

CORPORATION STOPS:
 McDONALD - 4701 (1")
 MUELLER - H15000 (1")
 FORD - F600 (1")

CURB STOPS:
MINNEAPOLIS PATTERN
 McDONALD - 6504 (1")
 MUELLER - B15-154 (1")
 FORD - B22-444 (1")

CURB BOXES:
 McDONALD - 5631-B
 WESTERN 100

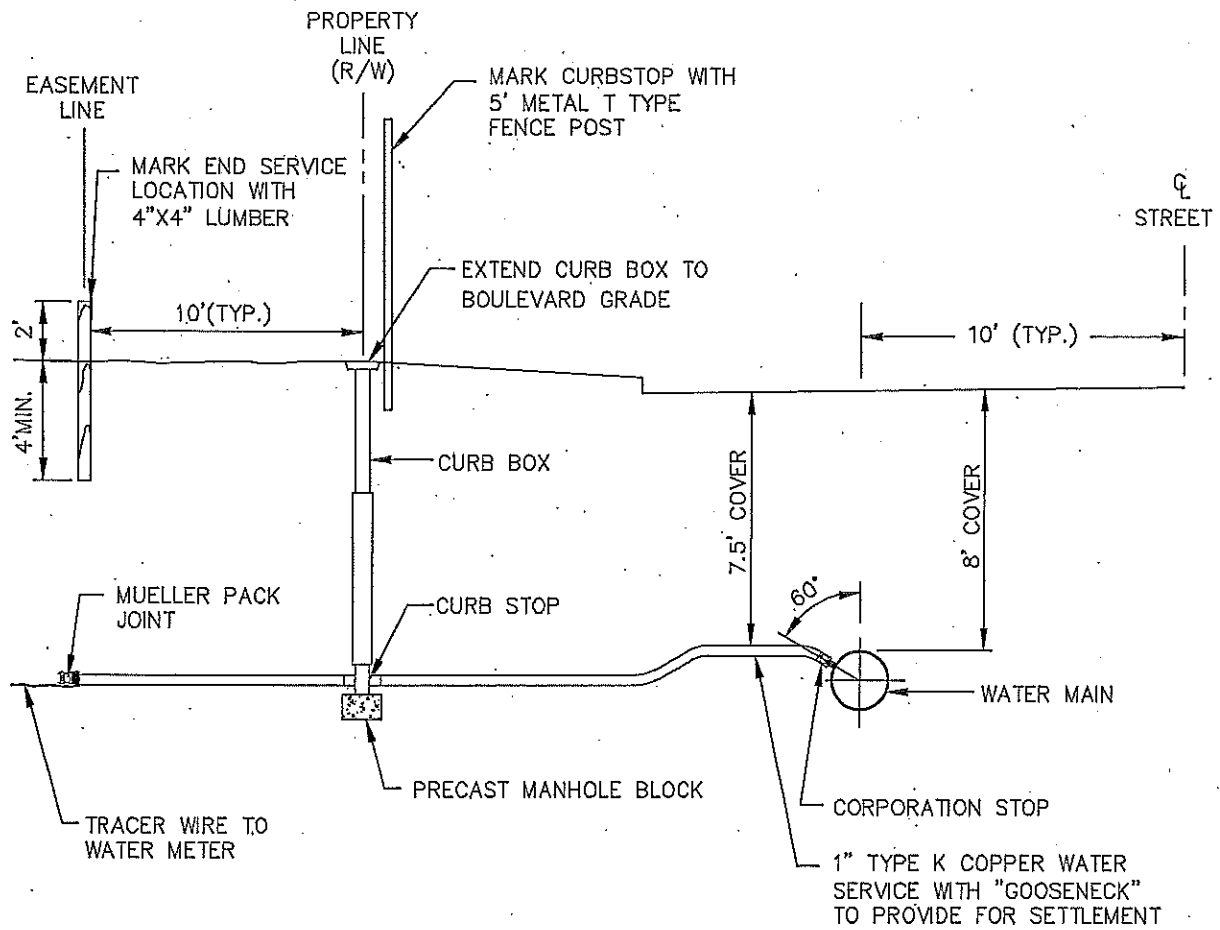
CAPS:
 McDONALD - 5627-LTW
 WITH 1 1/4" DIAMETER
 BRASS CONCENTRIC PLUG.

Revisions:	
12/2010	
5/2012	



WATER SERVICE
(PLASTIC PIPE)

STANDARD PLATE NO.
W-1 PP



- NOTES: 1. MAINTAIN 18" VERTICAL & 24" HORIZONTAL SEPARATION BETWEEN SEWER & WATER SERVICE LINES.
 2. INSTALL MUELLER PACK JOINT E-15429 TO THE END OF COPPER FITTING WITH INSERT SLEEVE.
 3. ATTACH 12 GAUGE TRACER WIRE FROM PACK JOINT TO WATER METER.
 4. CONNECTIONS TO EXISTING COPPER PIGTAIL ARE ALLOWED WITH APPROVED FITTING.

CORPORATION STOPS:
 McDONALD - 4701 (1")
 MUELLER - H15000 (1")
 FORD - F600 (1")

CURB STOPS:
MINNEAPOLIS PATTERN
 McDONALD - 6504 (1")
 MUELLER - B15-154 (1")
 FORD - B22-444 (1")

CURB BOXES:
 McDONALD - 5631-B
 WESTERN 100

CAPS:
 McDONALD - 5627-LTW
 WITH 1 1/4" DIAMETER
 BRASS CONCENTRIC PLUG.

Revisions:	
12/2010	
5/2012	



WATER SERVICE
(PLASTIC PIPE)

STANDARD PLATE NO.
W-1 PP